

Courses & Distance

5 58° E 68 perches

5 66 W 83

5 19 E 100

5 69 W 188

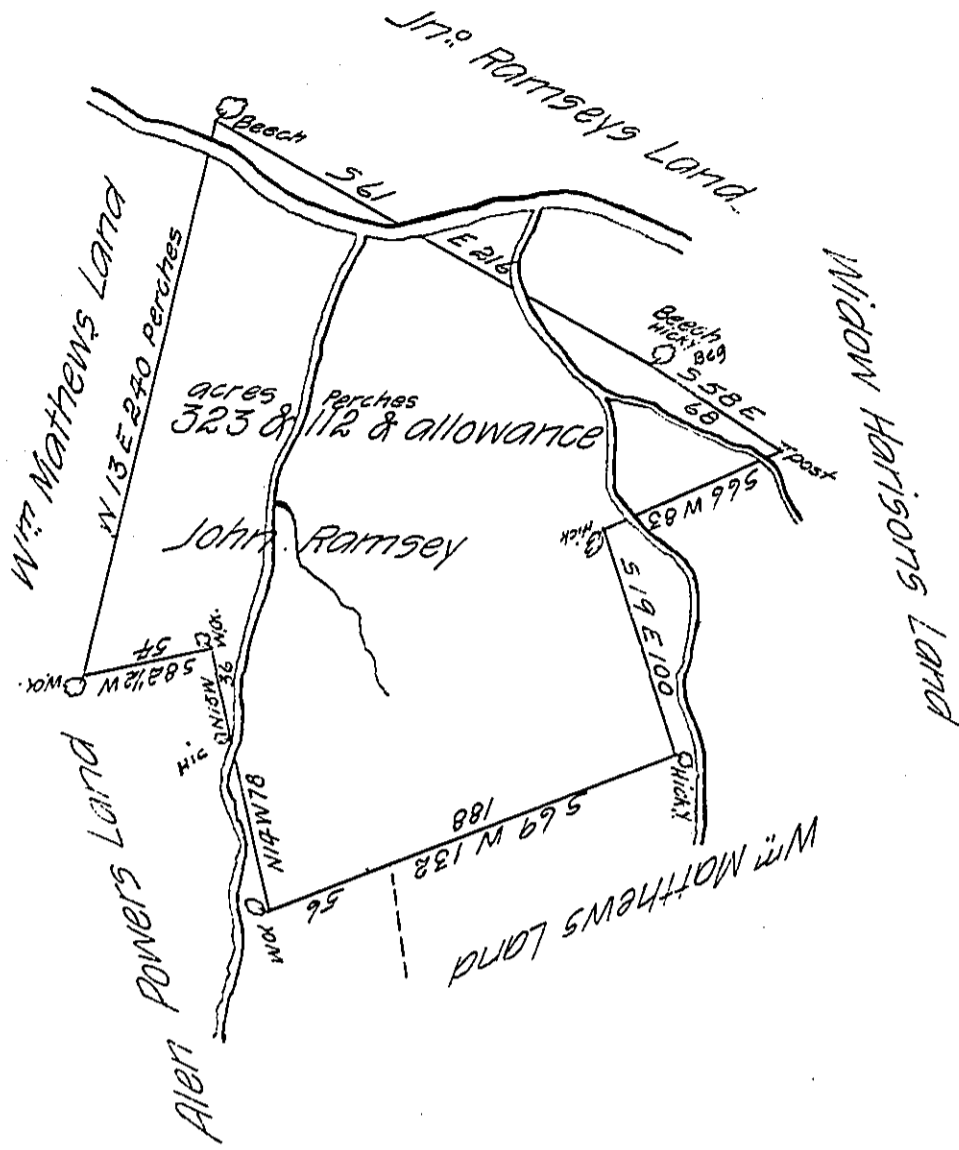
N 17 W 78

N 15 W 36

5 82 1/2 W 54

N 13 E 290

5 61 E 216



A draught of a tract of land situate in Rye township on the south side of the river Juniatta in Cumberland County surveyed for John Ramsey March the 12th 1783 containing three hundred & twenty three acres & one hundred & twelve perches and the allowance of six per cent for roads &c.

Surveyed on Wt. to J^r. Ramsey dat^d 6th Feb^y. 1775

P^r. me Jas^s. Harris

IN TESTIMONY that the above is a copy of the original remaining on file in the Department of Internal Affairs of Pennsylvania, made conformably to an Act of Assembly approved the 16th day of February, 1833, I have hereunto set my Hand and caused the Seal of said Department to be affixed at Harrisburg, this twenty sixth day of July 1906

Isaac P. Brown
Secretary of Internal Affairs